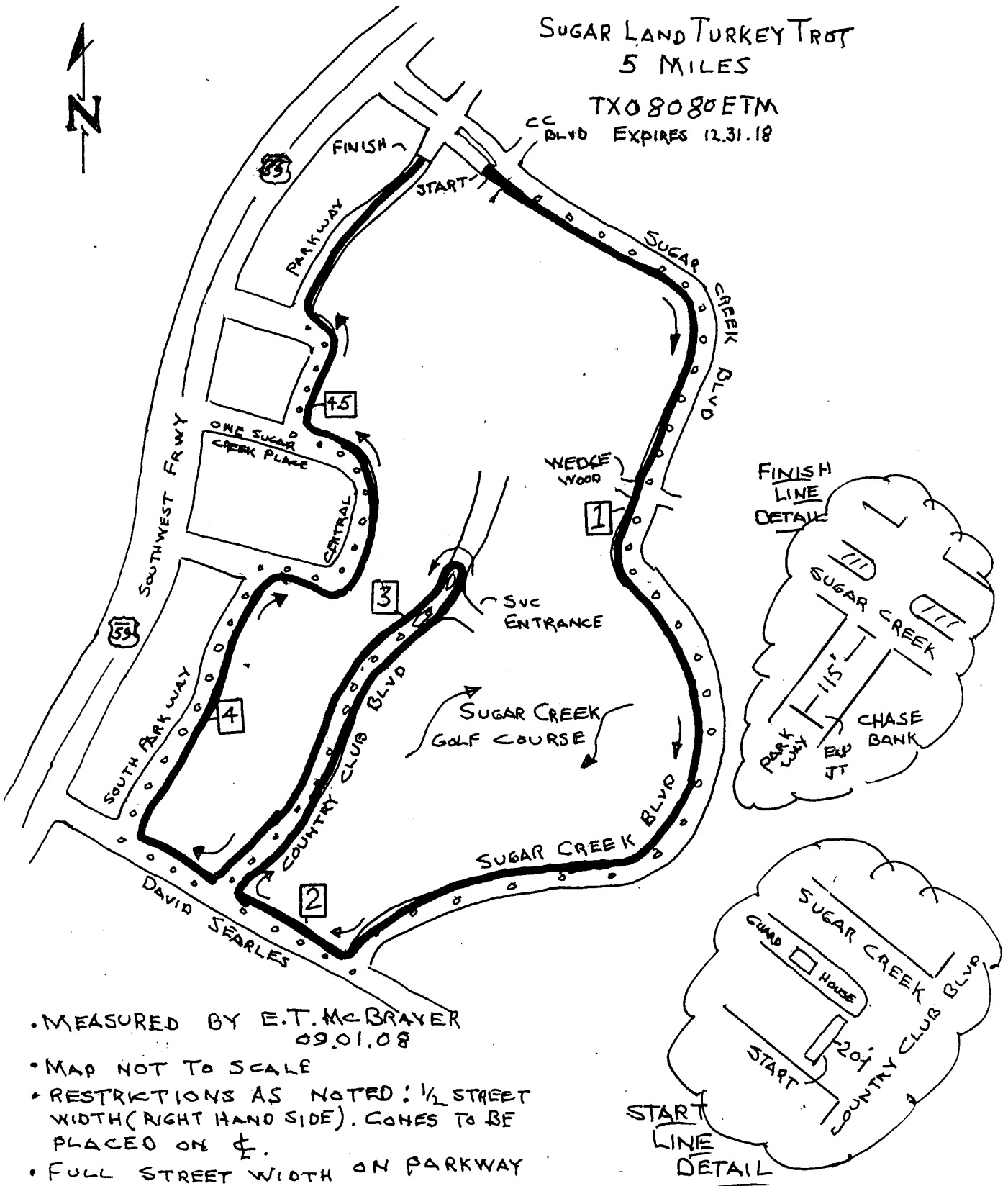


# SUGAR LAND TURKEY TROT 5 MILES

TX08080ETM

CC BLVD EXPIRES 12.31.18



- MEASURED BY E.T. McBRAYER 09.01.08
- MAP NOT TO SCALE
- RESTRICTIONS AS NOTED: 1/2 STREET WIDTH (RIGHT HAND SIDE). CONES TO BE PLACED ON ♀.
- FULL STREET WIDTH ON PARKWAY



# Road Running Technical Council USA Track & Field Measurement Certificate



Sugar Land Turkey Trot

5 Miles

TX08090ETM

Certified Points/Measured Points/Course Description

TX08090

Name of the course: Sugar Land Turkey Trot Distance: 5 M

Location (state): TX (city): Sugar Land

Type of course: road race  calibration  track  Configuration: Partial Loop

Type of surface: paved  100 % dirt  gravel  grass  track  %

Elevation (meters above sea level) Start 22 m Finish 22 m Highest 22 m Lowest 21 m

Straight line distance between start & finish 110 m Drop 0 m/km Separation 1.4 %

Measured by (name, address, & phone): E.T. McBrayer, 4021 Montrose Blvd, Houston, TX 77006-4956 713.523.5679

E-mail: mamectm@sbccglobal.net

Race contact (name, address, & phone): Andy Stewart, 13895 Southwest Freeway, Sugar Land, TX 77478 281.242.7700

E-mail:

Measuring Methods: bicycle  steel tape  electronic distance meter

Number of measurements of entire course: 2 Date(s) when course measured: Sep 01, 2008

Race date: Nov 27, 2008 Course paperwork submission date: NA

Replaces: TX99090ETM (if applicable) Certification code: TX08090ETM

Notice to Race Director  
Use this Certification Code in all public  
announcements relating to your race.

## Be It Officially Noted That

Based on an examination of data provided by the above named measurer, the course described above and in the map attached is hereby certified as reasonably accurate in measurement according to the standards adopted by the Road Running Technical Council. If any changes are made to the course, this certification becomes void, and the course must then be recertified.

Validation of Course — In the event a National Open Record is set on this course, or at the discretion of USA Track & Field, a validation remeasurement may be required to be performed by a member of the Road Running Technical Council. If such a remeasurement shows the course to be short, then all pending records will be rejected and the course certification will be cancelled.

This certification expires on December 31 in the year 2018

AS NATIONALLY CERTIFIED BY:

Tom McBrayer — USATF/RRTC National Certifier

Date: Sep 01, 2008

4021 Montrose • Houston, Texas 77006-4956 • 713-523-5679 • E-mail: mamectm@sbccglobal.net

### CERTIFIED POINTS

START On Sugar Creek Blvd, eastbound, 20' west of the west curb of Country Club Blvd., the east edge of the car stop stripe

FINISH On Parkway Blvd., an expansion joint 115' south of Sugar Creek Blvd, adjacent to Chase Bank

### MEASURED POINTS

MILE 1 On Sugar Creek Blvd (1200 block), 45' south of Wedgewood Blvd, at 1210 mailbox

MILE 2 On David Searles between Sugar Creek Blvd, and Country Club Blvd., 40' east of light pole #436596 at 1534 Searles

Turn-Around On Country Club Blvd, north end of first median north of service entrance to Sugar Creek Golf Course

MILE 3 On Country Club Blvd, southbound at 1939, 25' south of the mail box

MILE 4 On South Parkway (14,800 block), 85' north of Lake Bend Rd

MILE 4.5 On Parkway Blvd, just north of One Sugar Creek Place Blvd, 85' north of light pole #500498

### COURSE DESCRIPTION

From START on Sugar Creek Blvd  
East and south to Searles  
West to Country Club Blvd  
North to turn-around  
South to Searles  
West to South Parkway Blvd  
North to Central  
North to Parkway Blvd  
North to FINISH